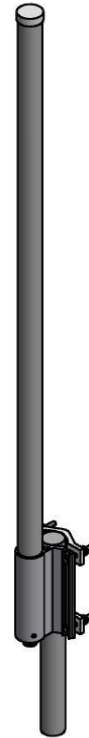
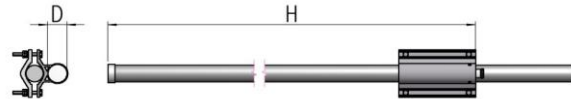


Omni-10.5dBi

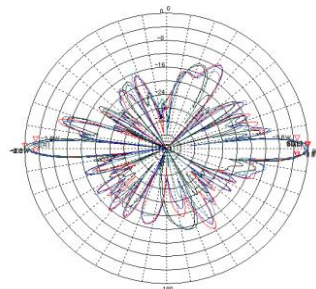
i. Electrical Specification		
Frequency Range	1920 ~ 2170 MHz	
Band Width	250 MHz	
Gain	≥ 10.5 dBi	
Polarization	Vertical	
Beam width	Horizontal	360°
	Vertical	7° ± 3°
F-B ratio	Horizontal (@180 ± 30°)	-
	Vertical (@180 ± 60°)	-
VSWR	≤ 1.5 : 1	
Impedance	50 Ω	
Isolation	-	
IMD (2x20W)	≤ -140 dBc	
1st Upper Side lobe level	-	
Cross-Polar Ratio	0°	-
	±60°	-
Tracking (±60 °)	-	
Squint	-	
Maximum input power	200 W	



ii. Mechanical Specification	
Radom Dimension (D x H)	Ø 49.8 x 1630 mm
Weight (exclude bracket)	≤ 4.52 kg
Connector Type	7/16"DIN-Female x 1
Withstand Wind Pressure	60 m/sec
Radom Material (color)	F.R.P (Cool Gray 4C)
Mechanical Down Tilt	0 ° ~ 20 °
Temperature	-40 °C ~ 70 °C
Packing Size (H x W x D)	-
Packing Weight	-



iii. Radiation Pattern



Vertical Pattern